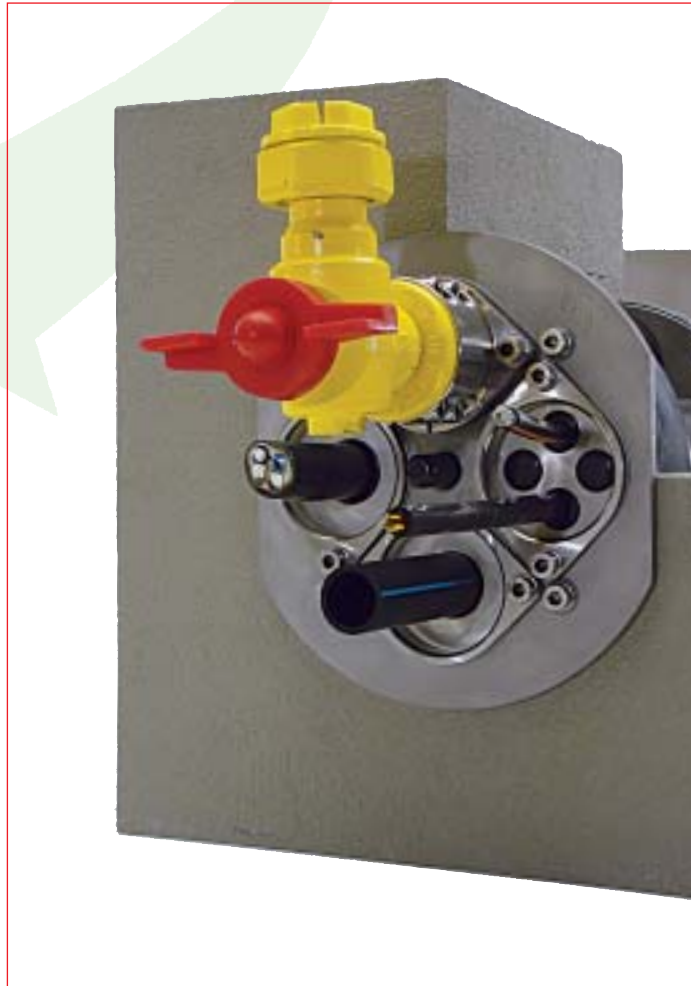




MSE-K

Multiple Branch Entrance Type K



Multiple Branch Entrance with separation according to branch of industry suitable for dry construction.

Tested to VP 601.

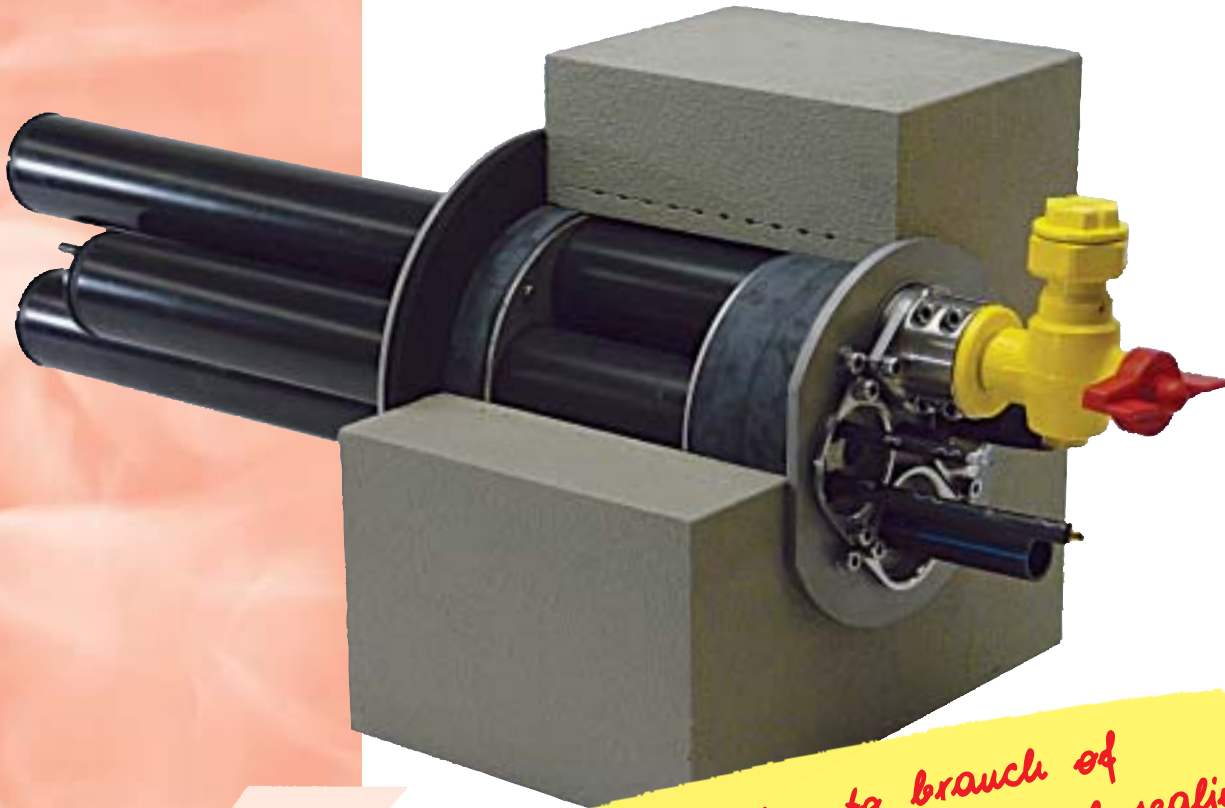


SYSTEM-TECHNIK

Leading in ideas

MSE-K

Multiple Branch Entrance Type K



100% separation to branch of industry by means of individual sealing

For buildings with basement

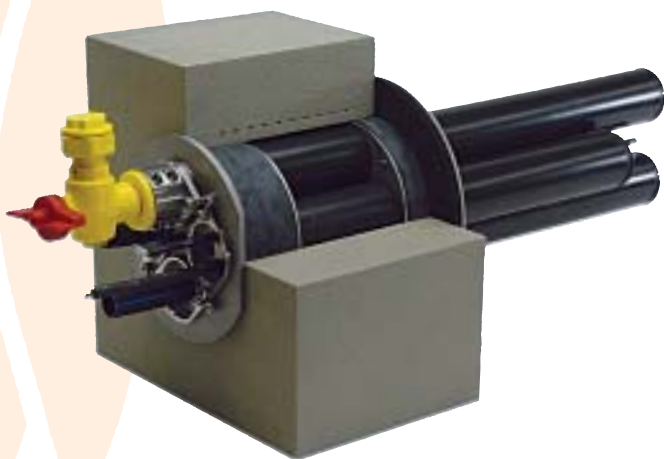
- ▶ tested to VP 601
- ▶ gas- and watertight
- ▶ dry installation (grouting possible as an option)
- ▶ installation in diamond tipped drilled holes or pipe linings with an inside diameter of 200 mm
- ▶ suitable for a wall thickness of up to 550 mm
- ▶ variable arrangement of individual supply lines
- ▶ connection of four sheathing tubes DN 75 possible by means of simple plug connections (other sheathing tube diameters on request)
- ▶ application of commercial gas supply house entrances – no double holding in stock (at the moment tested with RMA gas supply house entrances; Schuck and other designs in the course of testing).

Detailed information on request.

In preparation for buildings without basement.

Application / Specifications Text

Typ K1



Multiple Branch Entrance sealing on both sides, with flange on the outside wall.

Multiple Branch Entrance MSE-K1 for gas- and presswater-tight sealing of supply lines for electricity, water, telecommunication, and gas, suitable for buildings with basement. With additional sealing flange on the outside wall of the building, for dry installation into diamond tipped drilled hole or pipe lining with an inside diameter of 200 mm. Tested to VP 601. Individual sealing and variable arrangement of all supply lines. Suitable for the installation of commercial gas supply house entrance components of various manufacturers (e.g. RMA, Schuck and others) by means of collar clamp. Connection of empty pipe systems DN 75 to the outside wall of buildings possible.

Make: UGA SYSTEM-TECHNOLOGY
Type MSE-K1

or equivalent

Order no.: MSE-K1

Application / Specifications Text

Multiple Branch Entrance MSE-K2 for gas- and presswater-tight sealing of supply lines for electricity, water, telecommunication, and gas, suitable for buildings with basement.

For dry installation into diamond tipped drilled hole or pipe lining with an inside diameter of 200 mm.

Tested to VP 601. Individual sealing and variable arrangement of all supply lines.

Suitable for the installation of commercial gas supply house entrance components of various manufacturers (e.g. RMA, Schuck and others) by means of collar clamp.

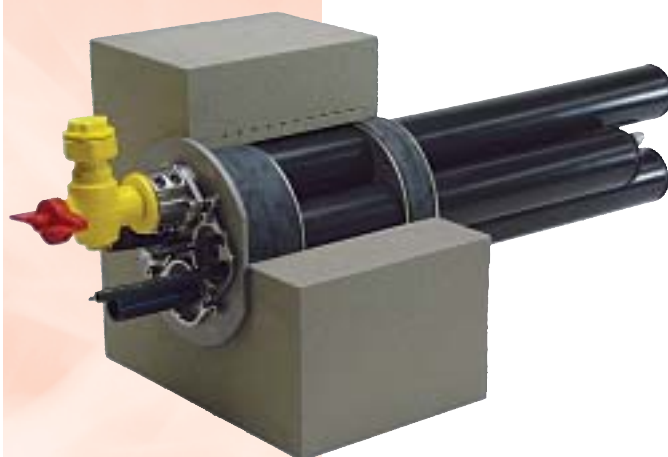
Connection of empty pipe systems DN 75 to the outside wall of buildings possible.

Make: UGA SYSTEM-TECHNOLOGY
Type MSE-K2

or equivalent

Order no.: MSE-K2

Typ K2



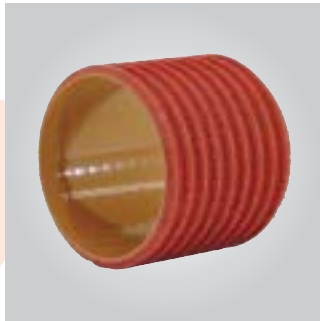
Multiple Branch Entrance sealing on both sides.

The Multiple Branch Entrance is suitable for pipes and cables with following diameters:

Gas:	1" to 1½ x 1"
Water:	up to 2", outside diameter 63 mm
Electricity:	up to outside dia. 20 - 50 mm + outside dia. 63 mm
Telecommunication:	up to 4 x data lines (e.g. phone, cable TV, etc.) of outside dia. 7 to 19 mm.

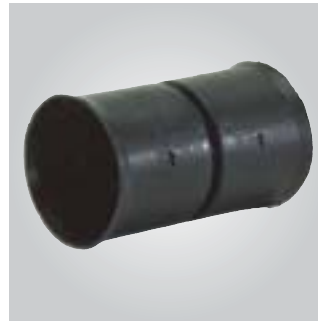
Other versions, e.g. solutions for grouting and long-distance energy on request.

Accessory for MSE-K



Pipe Lining
L = Length in mm.

🔗 order no.: **MSE-FU-K/L**



Double Sleeve
for flexible tubes DN 75

🔗 order no.: **MSE-DM-DN75**



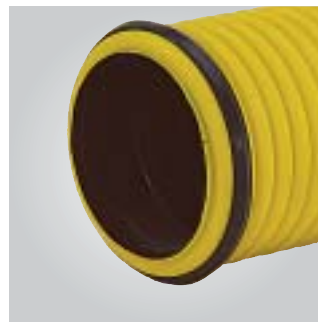
Double Sleeve
for reducing or enlarging continuing pipes (on request or to requirement)

🔗 order no.: **MSE-DM-D1/D2**



Flexible Sheathing Tubes
for laying the supply lines.
Flexible tubes DN 75

🔗 order no.:
MSE-WR-DN75 red
MSE-WR-DN75 black
MSE-WR-DN75 blue
MSE-WR-DN75 yellow



Profile Sealing Ring
for flexible tubes DN 75

🔗 order no.: **MSE-PDR-DN75**



Yoke
for flexible sheathing tubes DN 75.
Arrangement 2 x 2

🔗 order no.: **MSE-ASH-2x2-DN75**



Sealing Elements
for flexible tubes DN 75
to the supply lines

🔗 order no.:
MSE-ADE-DN75 gas/D
MSE-ADE-DN75 water/D
MSE-ADE-DN75 electricity/D
MSE-ADE-DN75 telecommunication/D

We provide replacements for all parts which are impaired in their function due to faults in the material. No replacement for defects that are due to transport or storage or result from faulty processing or installation or the effects thereof. Our specifications are based on the current state of the art. Subject to technical modifications. Due to the amount of possible influences during installation and application our specifications do not release processors and users from checking and testing the material themselves.

Sealing systems and fire protection for cables and pipes

UGA SYSTEM-TECHNIK GmbH & Co.

Technical Systems and Products for integration into buildings

Heidenheimer Str. 80-82 · 89542 Herbrechtingen

Postfach 12 61 · 89539 Herbrechtingen

Phone: 0049 73 24 / 96 96 - 0 · Fax: 0049 73 24 / 96 96 - 96

e-mail: info@uga-systeme.de · internet: www.uga-systeme.de

